

newsletter

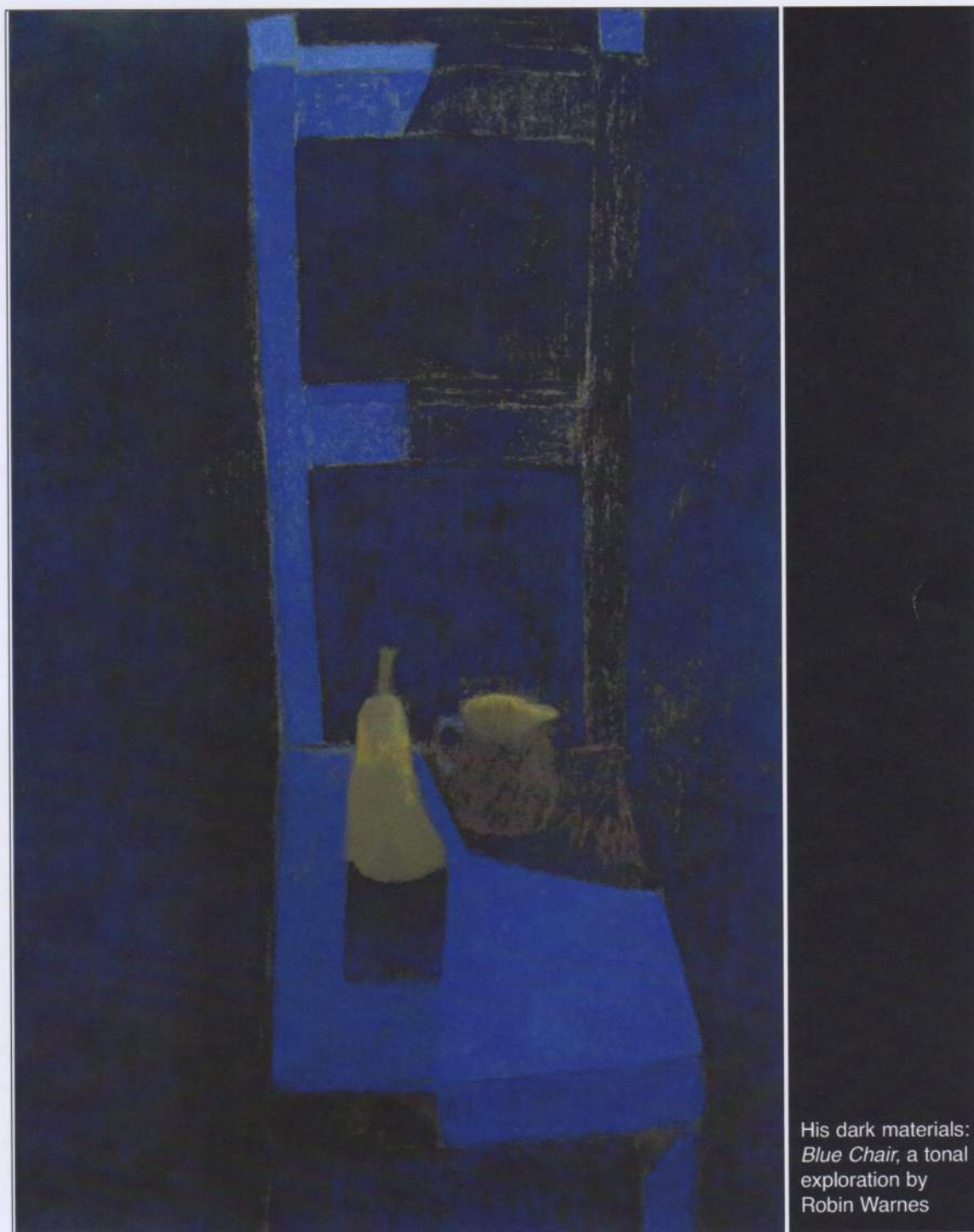


31

Sept 2015 website: www.thepastelsociety.org.uk

sponsored by Caran d'Ache

THE PASTEL SOCIETY



His dark materials:
Blue Chair, a tonal
exploration by
Robin Warnes

October exhibition honours Mark Leach



Pure Pigment is the very relevant title of an exhibition at the Bath Contemporary Gallery (www.bathcontemporary.com), 2 – 31 October. It will celebrate the work of the late Mark Leach, a former Vice-President of the Pastel Society, and will also include new paintings by Past President Moira Huntly, Vice-President Jeannette Hayes, Felicity House and Sarah Bee. Mark was well known for his dynamic, large-scale, abstract landscapes (*Canal de Midi*, left), and for his book, *Raw Colour with Pastels*.

The painting in the attic...

Reality TV programmes such as *Treasure in the Attic* and *Flog It!* are based on the idea of finding forgotten treasures around the house. Roger Dellar PS has a story of such a find which, if not highly valuable, is to be treasured for other reasons.

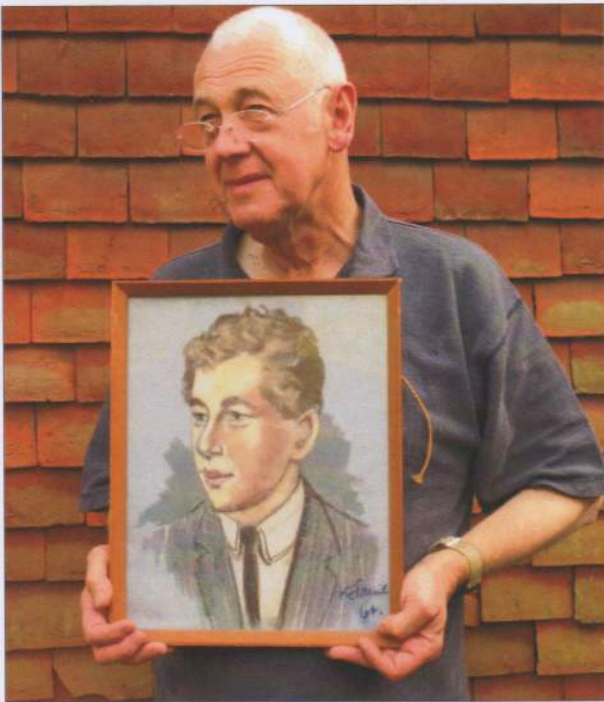
"As a youngster in the 50s, when I was 8-14, I went to Butlin's Holiday Camp every year and spent a lot of the time watching portrait artists working," he recalls. "Quite possibly, it was one of those situations that helped convince me I wanted to be an artist.

"One year, I had my portrait painted. Then, recently, sorting some things out at my step-mother's house, I came across that portrait in the attic and was astonished to find it was signed by Ken Paine. It put the hairs on the back of my neck up because now I know Ken, a fellow Member of the Pastel Society, so well."

French pastel president visits UK

Liliane Desmartes, President of La Société des Pastellistes de France, and a colleague, Philippe Baujard, paid a short visit to London in May, and took the opportunity to meet at the Mall Galleries with our own President, Cheryl Culver, Past President Tom Coates, and Eiko Yoshimoto, all of whom have exhibited in France.

Areas of potential co-operation were discussed, such as the possibility of promoting each society's exhibitions on the other's website, or an exchange of workshop tutors. Not least because France has a land mass more than twice the size of the UK, there are several pastel societies holding exhibitions in different towns and cities around the France, with one main society in Paris.



Don't forget to visit our website at www.thepastelsociety.org.uk